

3910 US Highway 176  
Tryon, NC



**WWE**  
WALKER · WALLACE  
& EMERSON  
REALTY



Enjoy the privacy of a mountainside lodge home on nearly 30 acres (subject to survey), within minutes of both Tryon and Saluda. The ridges of Melrose Mountain loom just across the Pacolet River as if a stone's throw away. A large rock waterfall with a sitting bench graces a corner just below the home, and the rushing of the river is heard from the back deck, as are the Big Fall and Little Fall creeks. Sit and enjoy a fire in the large stone fireplace in the great room with the game on. If you like the warmth of crackling wood, there's another fireplace in the bedroom, and another in the kitchen. On beautiful fall days, enjoy the forest color displays from the 1,500 s.f. of wrap-around deck, and once the leaves are gone, be amazed at the 180-degree mountain views. Roof replaced six months ago.

**To schedule your private showing or for further information,  
please contact Jeff Byrd 828-817-0012**





**WWE**  
WALKER-WALLACE  
& EMERSON  
REALTY











**WWE**  
WALKER-WALLACE  
& EMERSON  
REALTY











**WWE**  
WALKER-WALLACE  
& EMERSON  
REALTY







**WWE**  
WALKER-WALLACE  
& EMERSON  
REALTY







**WWE**  
WALKER-WALLACE  
& EMERSON  
REALTY







**WWE**  
WALKER-WALLACE  
& EMERSON  
REALTY







**WWE**  
WALKER-WALLACE  
& EMERSON  
REALTY











**WWE**  
WALKER-WALLACE  
& EMERSON  
REALTY







**WWE**  
WALKER-WALLACE  
& EMERSON  
REALTY





**3910 US Highway 176, Tryon**

Approximate Total Finished/Heated Living Area:  
3492 Square Feet

\*\*\*\*\*

Garage: 608 Square Feet  
Screened Porch: 144 Square Feet

\*\*\*\*\*

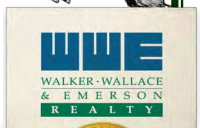
Total Square Footage Under Roof for All Finished/Unfinished & Heated/Unheated Areas:  
4244 Square Feet

\*Includes Screened Porch\*

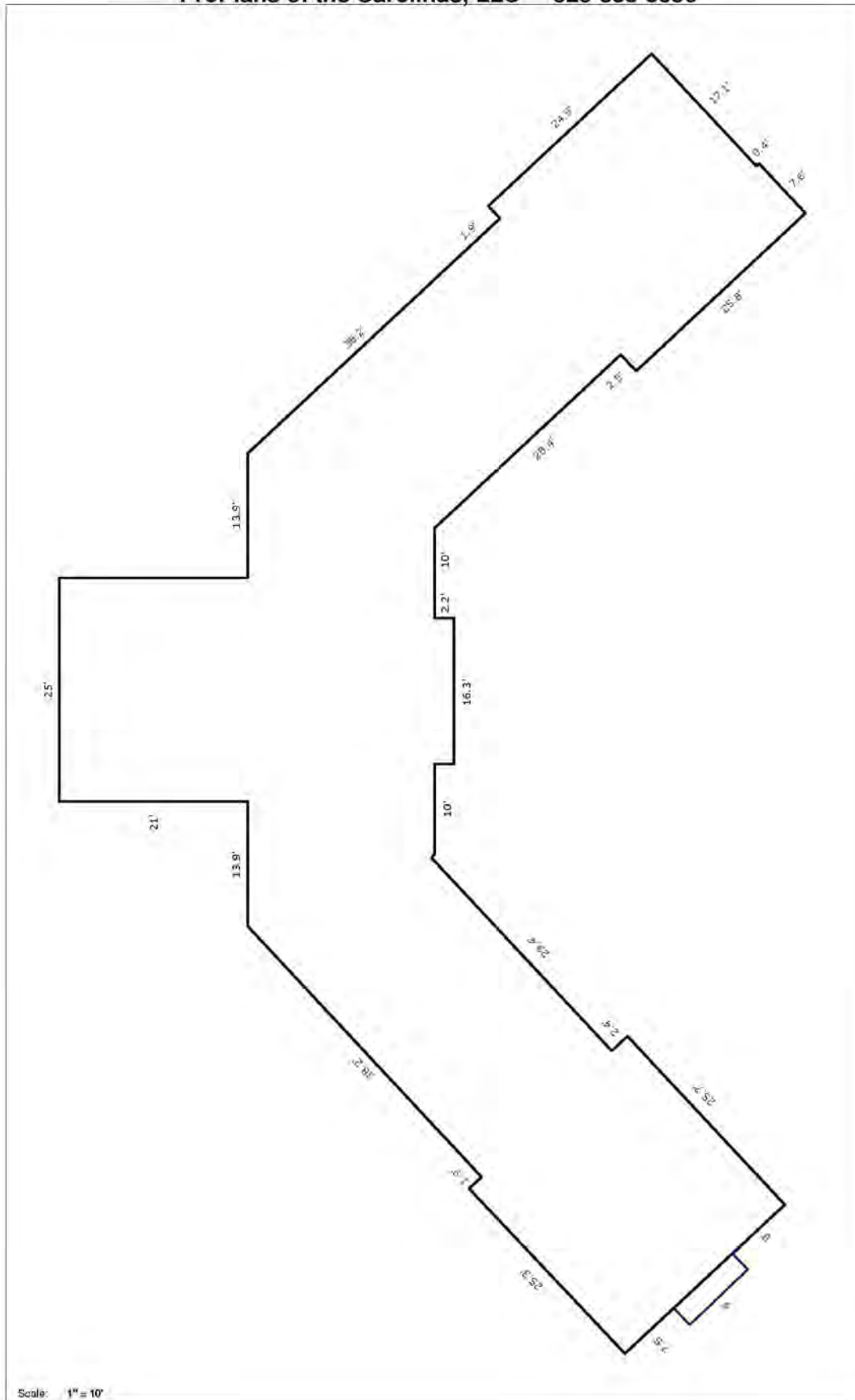
Prepared by **Judy Brouillette-O'Neil: ProPlans of the Carolinas, LLC** <sup>©</sup>  
for Walker, Wallace & Emerson

All dimensions are rounded to the nearest .01 and are deemed reliable, but not guaranteed.  
Square Footage Calculations determined following ANSI Standards and NCREC House Measuring Square Footage Guidelines.

Scale: 1" = 10'







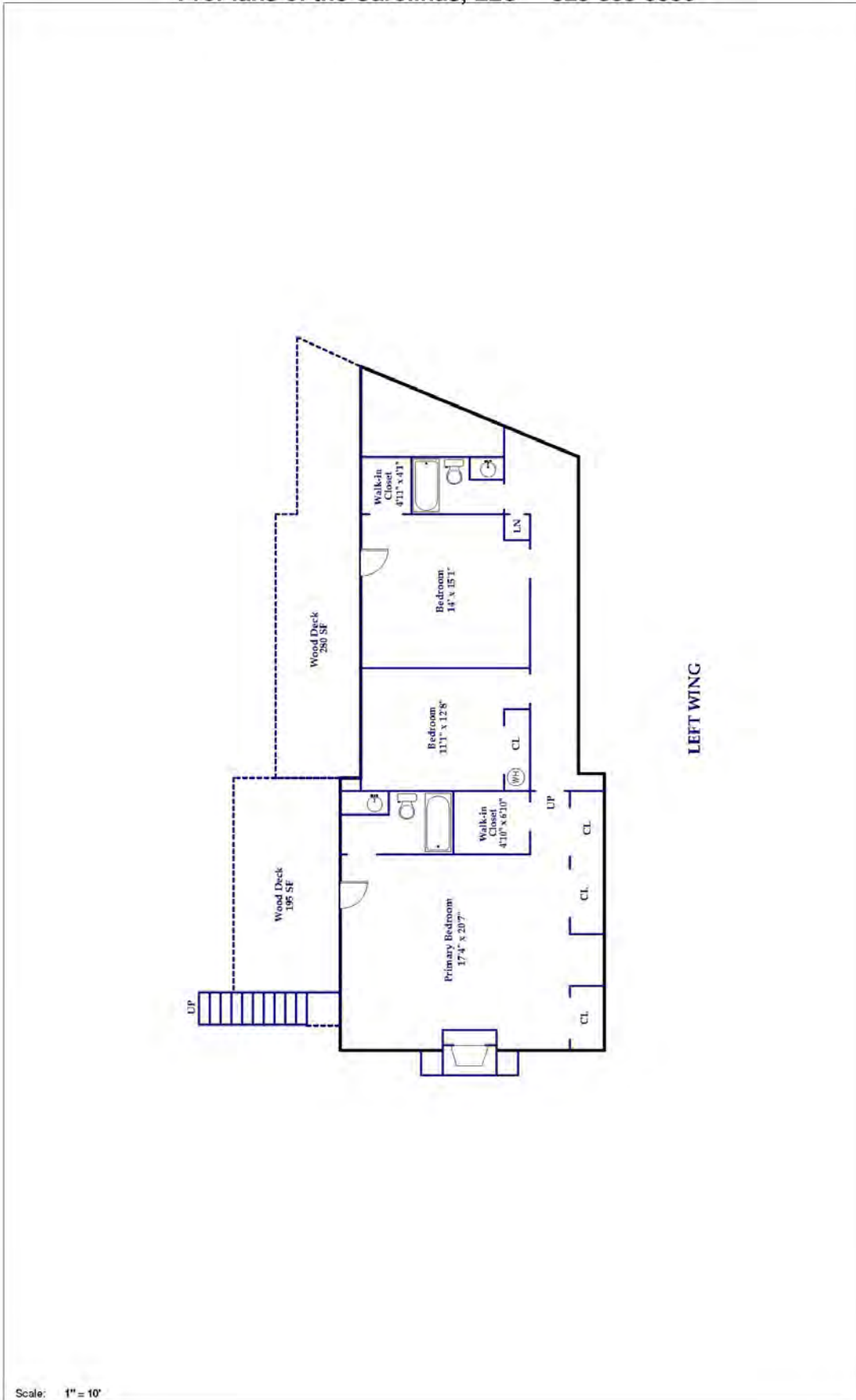
Scale: 1" = 10'



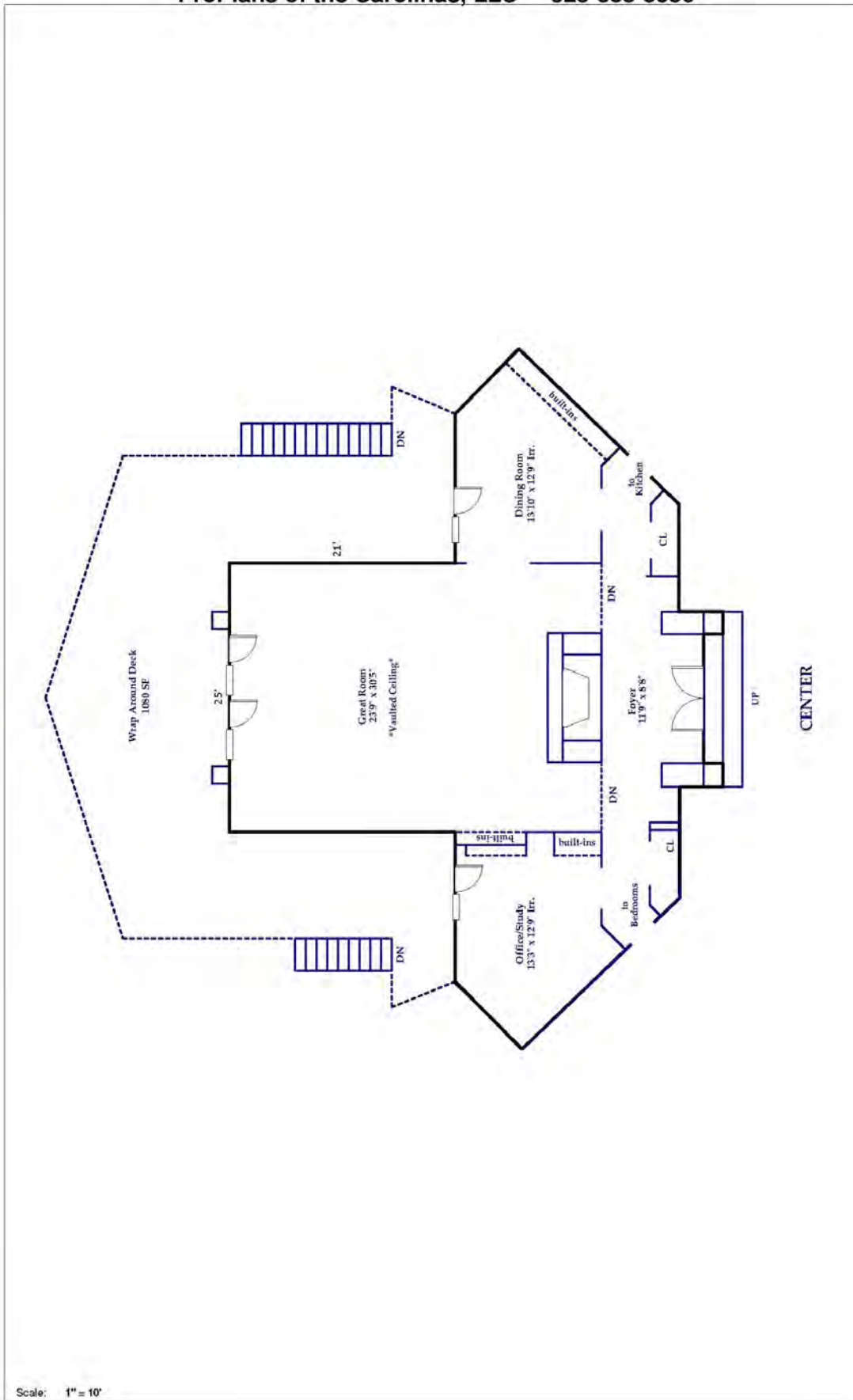
**WWE**  
WALKER-WALLACE  
& EMERSON  
REALTY











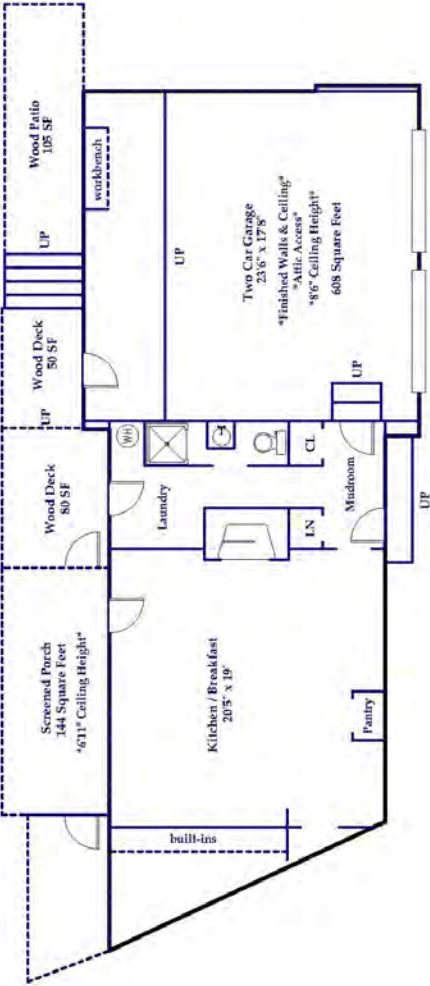
Scale: 1" = 10'



**WWE**  
WALKER-WALLACE  
& EMERSON  
REALTY







RIGHT WING

Scale: 1" = 10'



**WVE**  
 WALKER-WALLACE  
 & EMERSON  
 REALTY





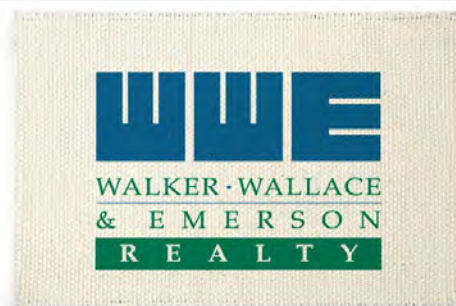


Jeff Byrd

828-817-0012 *cell*

864-457-2448 ext 116 *office*

Jeff@JeffByrdTryon.com



[wwwRealty.com](http://wwwRealty.com)

Walker, Wallace & Emerson Realty

400 East Rutherford Street Suite 100 | Landrum, SC 29356

864-457-2448 | 864-457-2076 fax